



LOW PROFILE MODEL

PARTS LIST

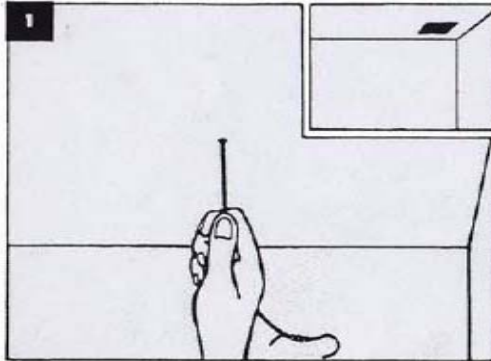
QTY	Description
1	Vent Sleeve w/ hinged Damper Lid
4	"L" Shaped Mounting Clips
1	Ceiling Grille
1	Slide-in Therma-Panel™
4	¼" Mounting Clip Screws
2	½" Grille Mounting Screws

IMPORTANT:

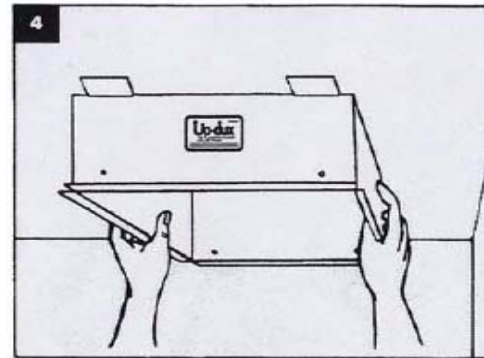
- AS DESCRIBED BELOW, UP-DUX® VENT MUST BE SUPPORTED IN THE CEILING BY ITS FOUR MOUNTING CLIPS AND SHOULD NOT BE ATTACHED TO CEILING JOISTS OR FRAMED IN. PRODUCT MALFUNCTION ATTRIBUTABLE TO IMPROPER INSTALLATION MAY NOT BE CLAIMED UNDER 90-DAY LIMITED WARRANTY.
- GARAGE INSTALLATIONS ARE **NOT** CODE-APPROVED.
- MINIMUM ATTIC CLEARANCE OF 7 ½" REQUIRED FOR INSTALLATION OF LOW PROFILE MODEL.
- A SLIDE-IN THERMA-PANEL™ IS INCLUDED WITH EACH UP-DUX® VENT. THIS THERMA-PANEL™ SHOULD ONLY BE USED DURING PERIODS WHEN THE EVAPORATIVE COOLER IS NOT IN OPERATION.
- THE CEILING GRILLE AND THERMA-PANEL™ MAY BE CLEANED WITH A MILD DETERGENT IN COOL WATER.
- REQUIRES SUFFICIENT ATTIC VENTILATION. FOR MORE INFORMATION SEE "UP-DUX® ATTIC VENTILATION RECOMMENDATIONS" AVAILABLE AT www.dialmfg.com (Technical).

Up-Dux® Ceiling-to-Attic Exhaust Vent - Installation Instructions (Low Profile Model)

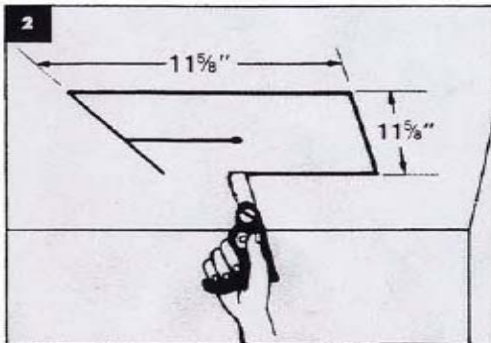
PLEASE READ THE FOLLOWING INSTRUCTIONS IN THEIR ENTIRETY BEFORE STARTING INSTALLATION.



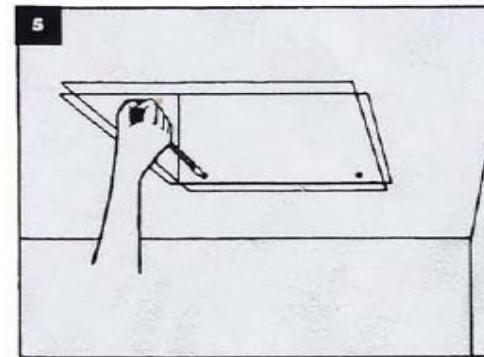
- Select installation location for Up-Dux® vent. For best air circulation, vent should be placed diagonally away from incoming air register(s) and 18" to 24" away from outer house wall (depending on the pitch of the roof).
- Drill a small hole within the selected location, a few inches from the nearest ceiling joist.
- Use a probe (such as the straightened end of a wire coat hanger) to make sure that vent installation will avoid any obstructions within the 7 ½" minimum attic clearance limit.



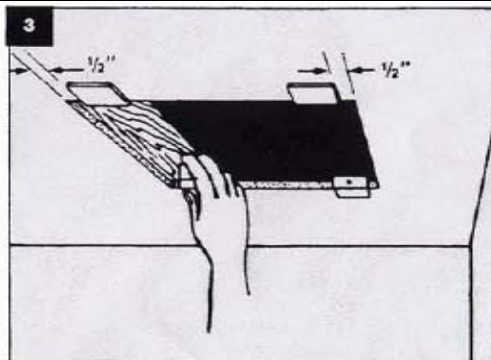
Being careful not to damage the aluminum lid, slide the vent into the ceiling opening – with the hinged end toward the outside house wall.



- Cut from the probe hole to the edge of – but NOT into – the ceiling joist.
- Using the ceiling joist as a guide, make a smooth 11-5/8" baseline cut along its length. This baseline cut will be one side of the vent opening. From each end of the baseline cut, measure a distance of 11-5/8" out and away from the ceiling joist.
- Using these measurements, scribe and cut the remaining three sides of the square 11-5/8" x 11-5/8" vent opening.



- Carefully align the pre-drilled holes on the mounting clips with corresponding holes on the vent's front and back (hinge-end) panels.
- Insert the ¼" mounting clip screws to secure the vent to the ceiling panel.



- Locate the four "L" shaped mounting clips that were included with the vent. Note that these mounting clips have pre-drilled holes that correspond to pre-drilled holes on the front and back (hinge-end) panels of the vent.
- Position and form each "L" shaped mounting clip as follows: (a) place the edge of the mounting clip exactly ½" away from the corner of the ceiling opening and (b) with the bottom of the "L" shaped clip held firmly against the bottom of the ceiling panel, press the top-edge of the mounting clip forward and downward, bending the clip around, and securing it to, the ceiling panel.



Use ½" grille mounting screws and pre-drilled holes to mount the ceiling grille into position on the vent.

IMPORTANT: DO NOT over-tighten the mounting screws. Warping of the ceiling grille frame caused by over-tightened mounting screws may not be claimed under warranty.