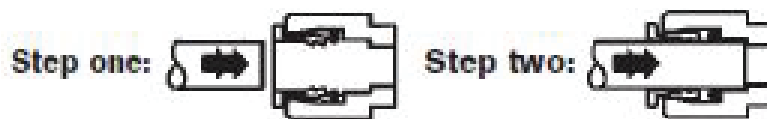
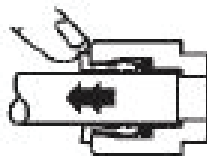


CONNECTS 1/4" COPPER & 1/4" POLY TUBING



To Disconnect: Push collet against tube and slide tube out of fitting.



CAUTION: Turn off electricity at circuit breaker before working on evaporative cooler.

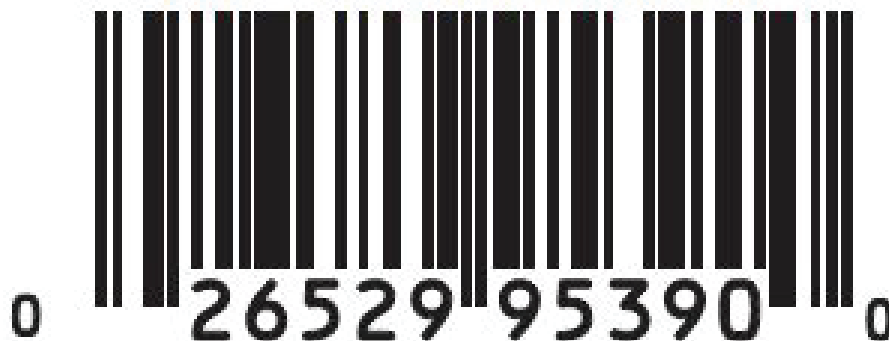
Copper Tubing: 1) Cut the tube square and deburr the end to prevent damage to seal. 2) Insert tube as shown. Push past the o-ring to the tube stop. Do not use Teflon tape or pipe goop.

Poly Tubing: 1) Cut the tube square. 2) Insert tube as shown. Push past the o-ring to the tube stop.

⚠ WARNING: Cancer and Reproductive Harm - www.P65Warnings.ca.gov.

Not For Potable Water

PN 9539 Form 99040-0519



www.dialmfg.com Made in China

© Copyright 2019 Dial Mfg., Inc. Phoenix, AZ