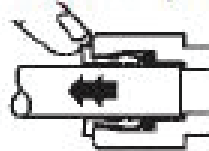


CONNECTS 1/4" COPPER OR 1/4" POLY TUBING TO 1/8" PIPE FITTINGS



To Disconnect: Push collet against tube and slide tube out of fitting.



CAUTION: Turn off electricity at circuit breaker before working on evaporative cooler.

Copper Tubing: 1) Cut the tube square and deburr the end to prevent damage to seal. 2) Insert tube as shown. Push past the o-ring to the tube stop. Do not use Teflon tape or pipe goop on Speed Fit connection end.

Poly Tubing: 1) Cut the tube square. 2) Insert tube as shown. Push past the o-ring to the tube stop.

NOT FOR USE WITH POTABLE WATER LINES

⚠ WARNING: Cancer and Reproductive Harm - www.P65Warnings.ca.gov.

PN 9536 Form 99039-0519



0 26529 95360 3

www.dialmfg.com Made in China
© Copyright 2019 Dial Mfg., Inc. Phoenix, AZ